



# STATION BRANDING

## U-ZOOLOGISCHER GARTEN

wtm [...] außenwerbung

# STATION BRANDING

## U-ZOOLOGISCHER GARTEN

wtm [...] außenwerbung

### STATION BRANDING

---

A single advertiser gets the exclusive advertising rights on the entire subway station. All media are available to him alone. All permanently leased media will also be released from all third-party advertising for this period.

You can advertise the entire station or just individual, individually selected media. The approx. 1,200 m<sup>2</sup> of advertising space offers plenty of space for creative brand presentations.

Passenger frequency	daily est. 132.279
Booking interval	monthly, 28 days guaranteed
Advertising types	City light poster, Billboards, Pillars, Posters on showcases, Floor Graphics, Stairs advertising, Banner etc.
Advertising area	est. 1.200 qm
Monthly rent	€ 100.000,00
Production est.	€ 75.000,00

Production costs can vary greatly depending on the advertising type.

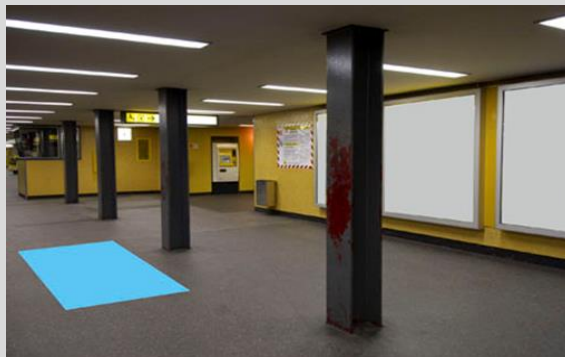
All prices plus VAT.

# STATION BRANDING

## U-ZOOLOGISCHER GARTEN

wtm [...] außenwerbung

### PLATFORM U2

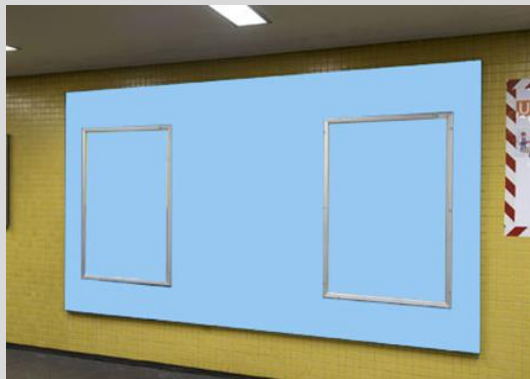


# STATION BRANDING

## U-ZOOLOGISCHER GARTEN

wtm [...] außenwerbung

### PLATFORM U2

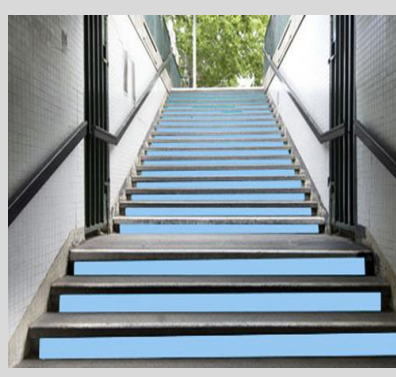
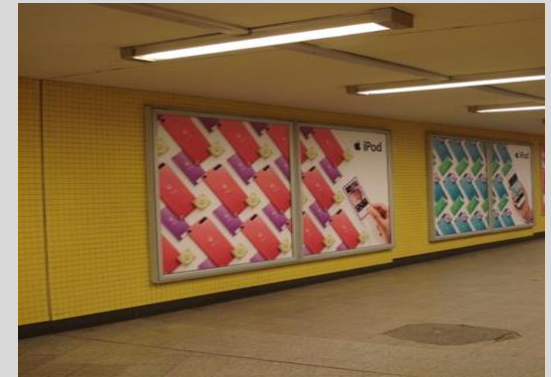


# STATION BRANDING

## U-ZOOLOGISCHER GARTEN

wtm [...] außenwerbung

### SERVICE HALL I-1 & I-2 U2

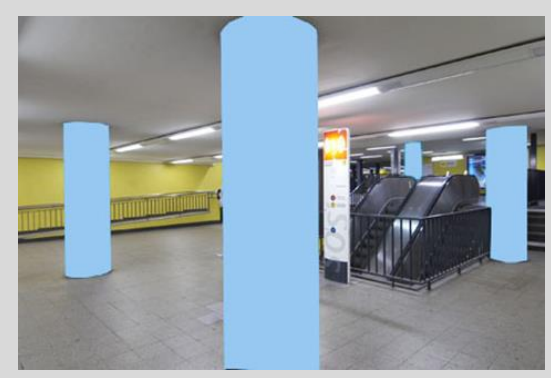


# STATION BRANDING

## U-ZOOLOGISCHER GARTEN

wtm [...] außenwerbung

### SERVICE HALL II-1 U2

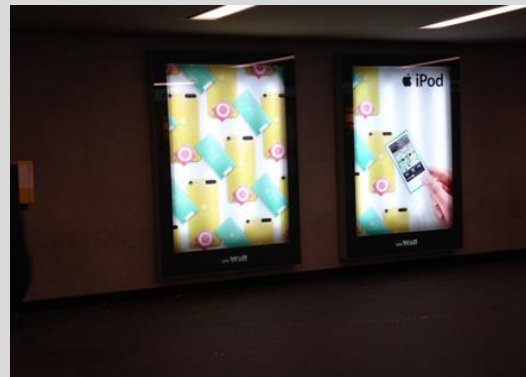
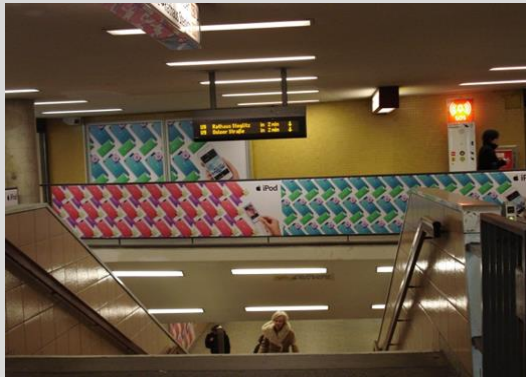


# STATION BRANDING

## U-ZOOLOGISCHER GARTEN

wtm [...] außenwerbung

### SERVICE HALL II U2

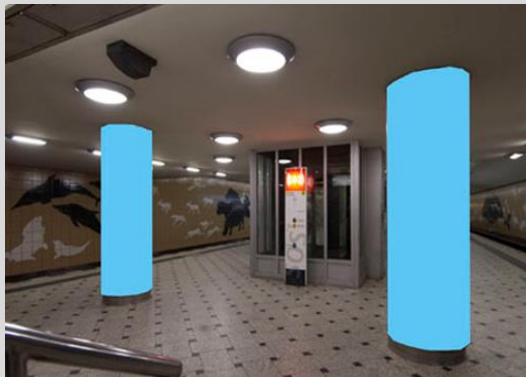
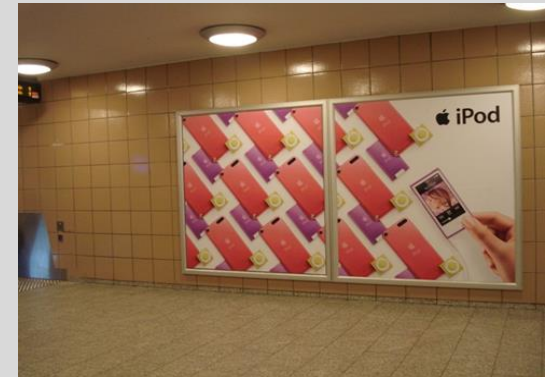
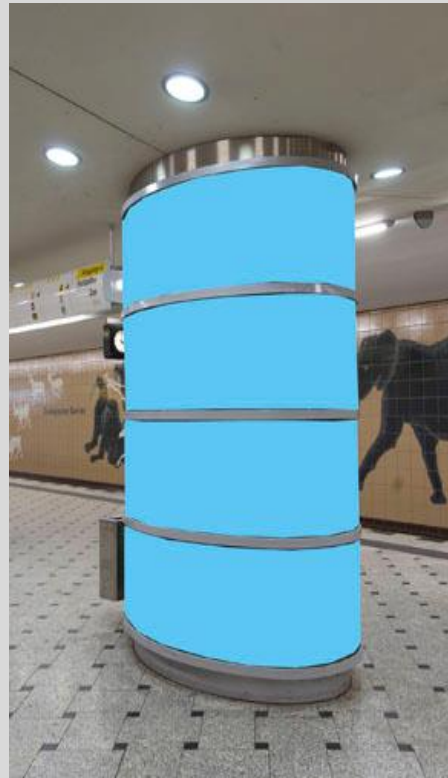
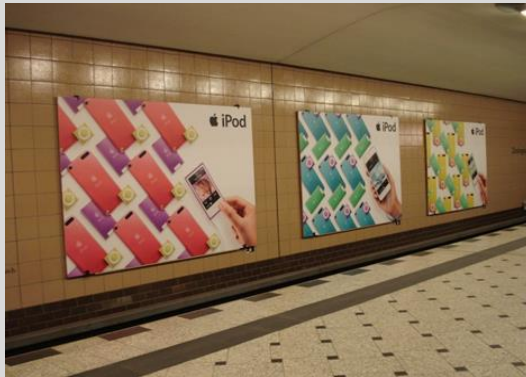


# STATION BRANDING

## U-ZOOLOGISCHER GARTEN

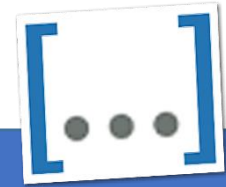
wtm [...] außenwerbung

### PLATFORM AND HALL U9





# CONTACT



## ILONA SCHWARZ

WTM MARKETING UND VERTRIEBSCONSULTING GMBH  
SCHARNWEBERSTRASSE 14  
13405 BERLIN

MAIL        SCHWARZ@WTM-AUSSENWERBUNG.DE  
PHONE      +49 (0)30 224 58 997  
MOBILE     +49 (0)177 392 13 43